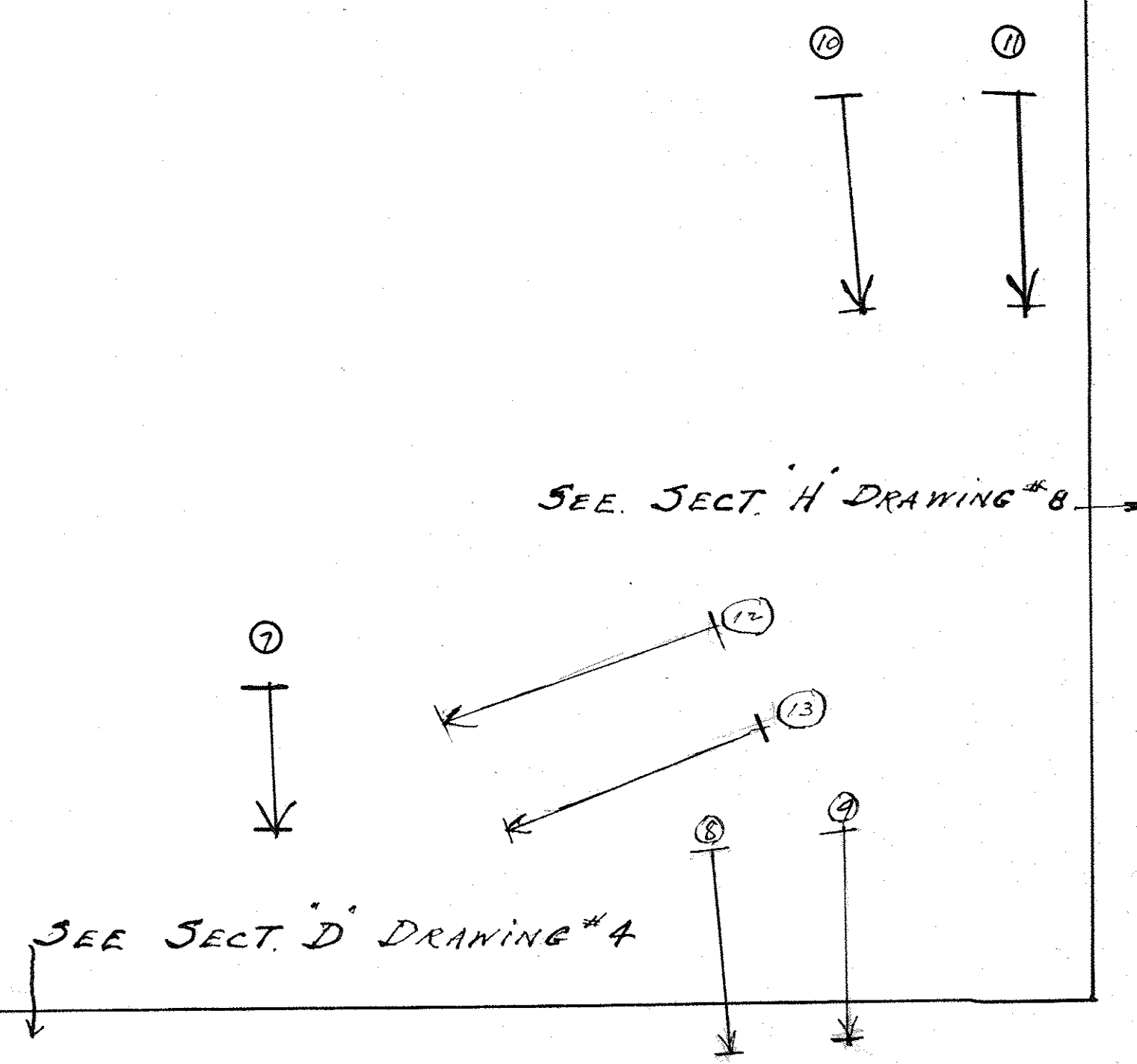
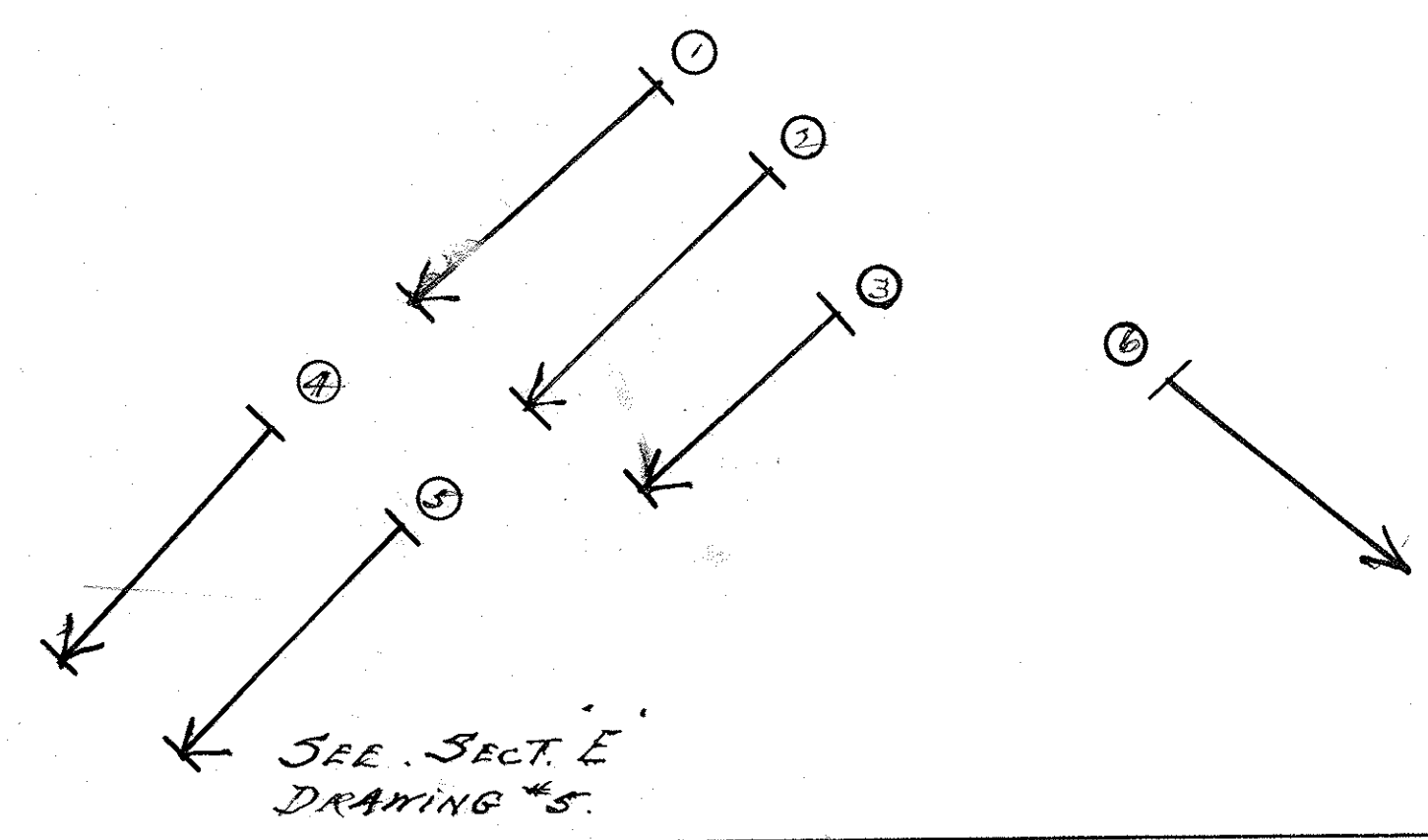


OLD
BEDFORD CEMETERY
SCALE - 1/4" = 1'-0"

- SYMBOLS -

- ↑ No HEAD OR FOOT STONES
- ↑ WITH HEAD STONE ONLY
- ↑ WITH FOOT STONE ONLY
- ↑ WITH HEAD AND FOOT STONES
- ↑↑ HEAD STONE FOR TWO GRAVES
- ↓ INFANTS GRAVE (1/2 SIZE)
- ↓ MOTHER AND INFANT IN SAME GRAVE
- MONUMENT

SECTION PLAN SHOWING LOCATION
OF PLOTS AND GRAVES
(ALSO SEE CEMETERY INDEX)
DEVELOPED FOR THE TOWN BOARD
BY
THE INDUSTRIAL AID BUREAU OF
THE TOWN OF BEDFORD, N.Y.
EXECUTED BY
R.R. POWELL L.M. MERES.
MAY - 1933.



SECTION "J"
DRAWING No 9