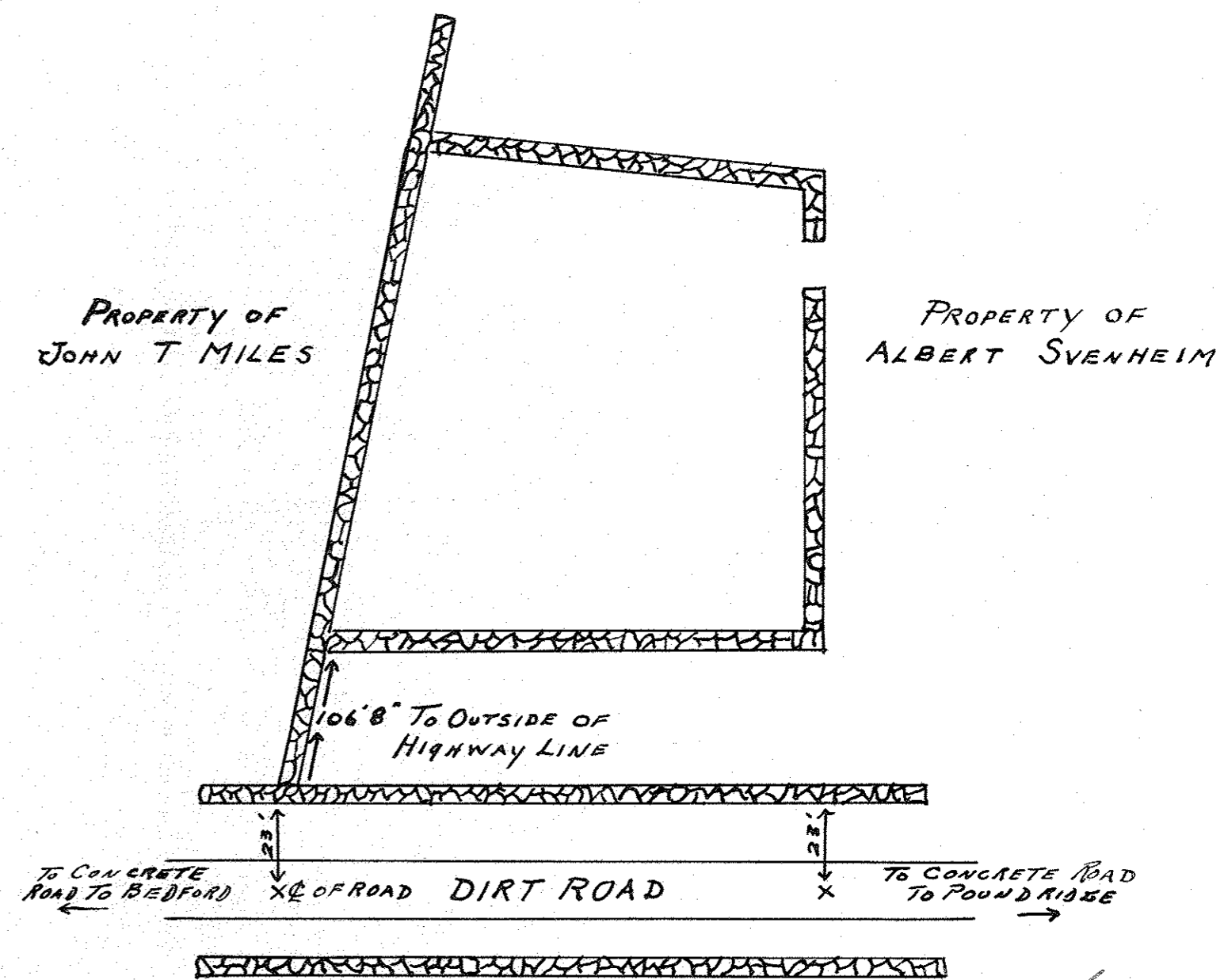
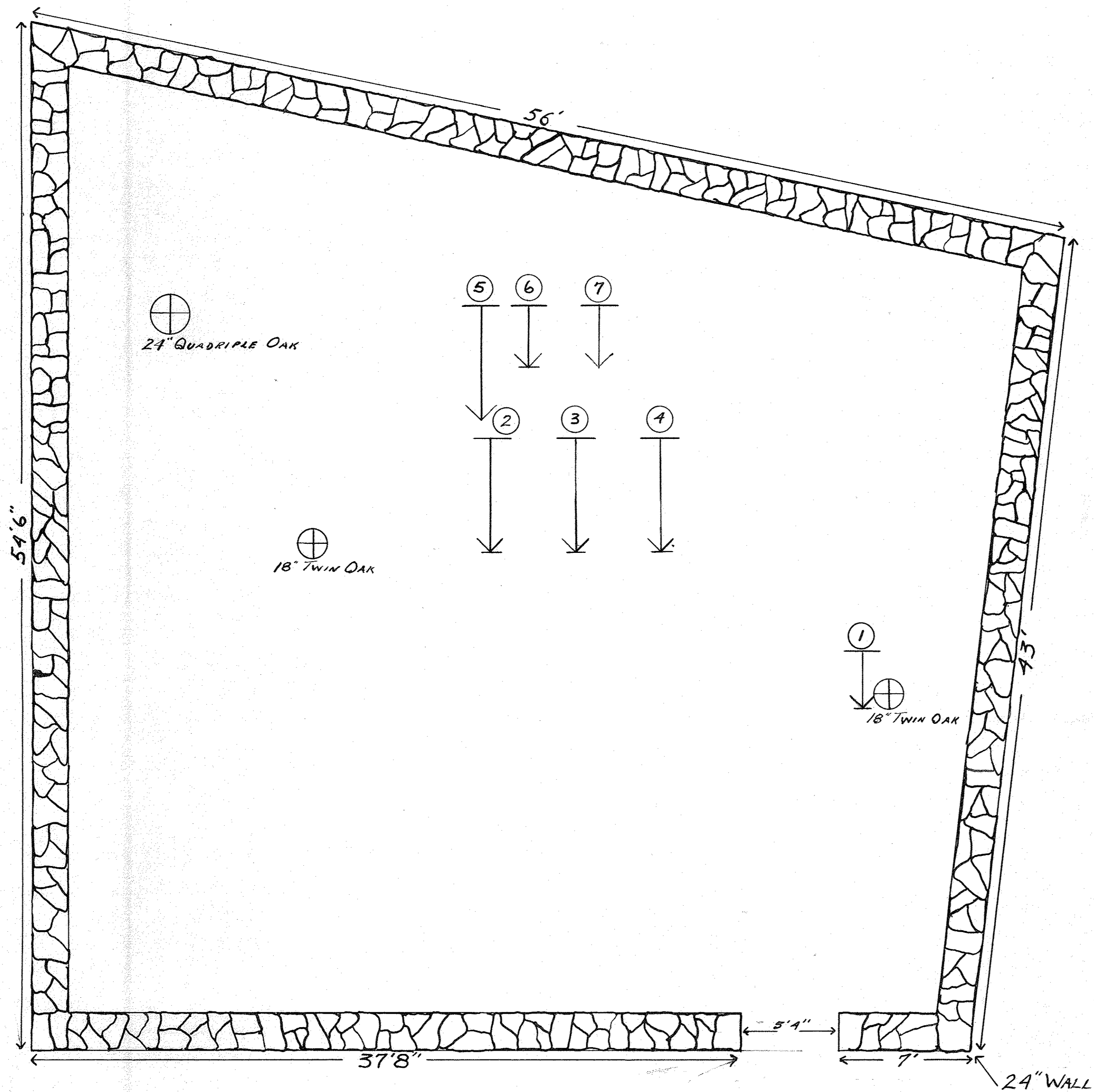
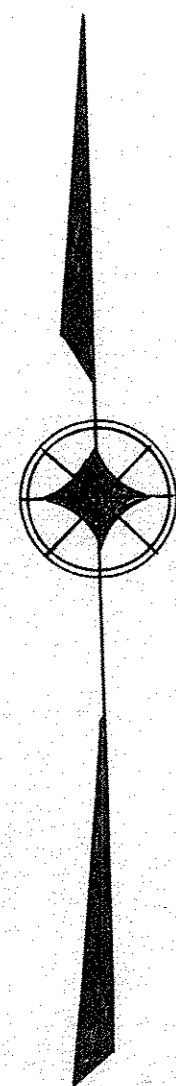


# HOLMES CEMETERY

SCALE 1/4"=10'



SYMBOLS	
	WITH HEAD STONE ONLY
	WITH HEAD AND FOOT STONES
	INFANTS GRAVE (1/2 SIZE)

SECTION PLAN SHOWING LOCATION OF PLOTS AND GRAVES (ALSO SEE CEMETERY INDEX) DEVELOPED FOR THE TOWN BOARD BY THE INDUSTRIAL AID BUREAU OF THE TOWN OF BEDFORD, N.Y. EXECUTED BY C. J. PRONAY - K. C. DINGEE DONATO CRISTOFARO APRIL 1933